

FIREPLACE INSERTS FROM BRUNNER



BKH flat 50-162

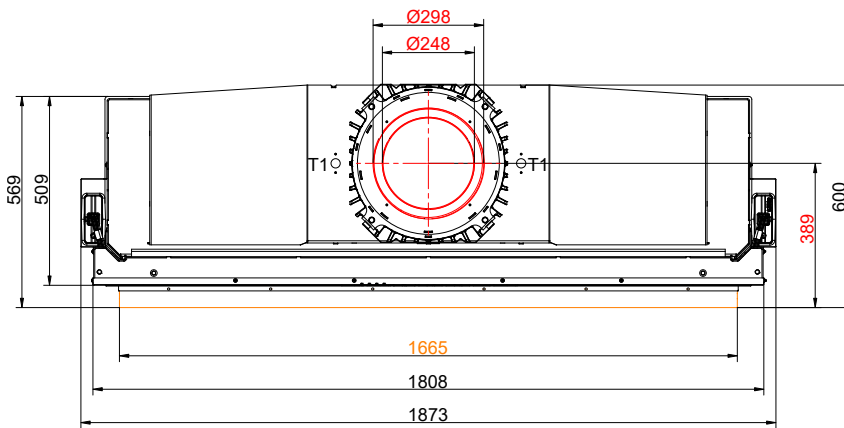
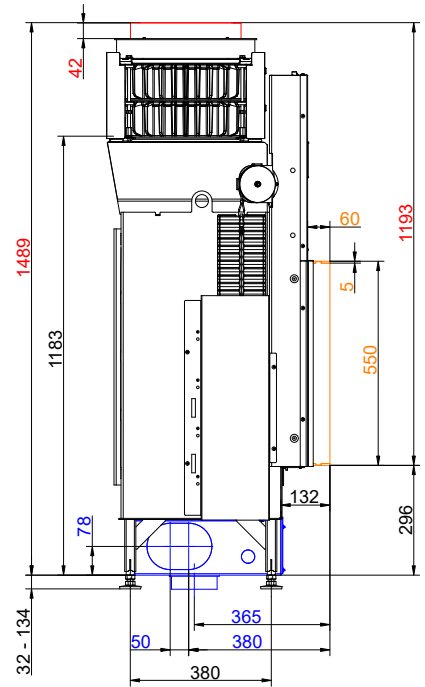
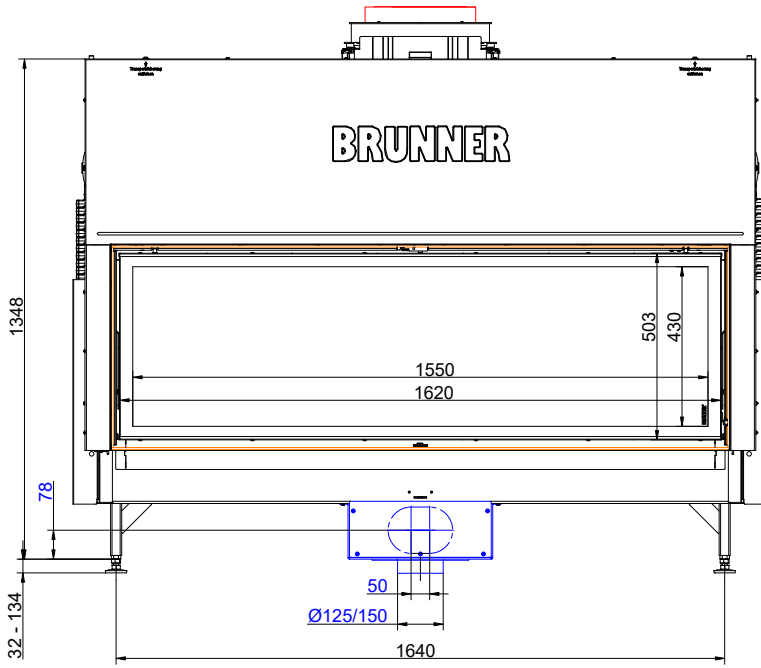
lifting door

State: 2025-04-15



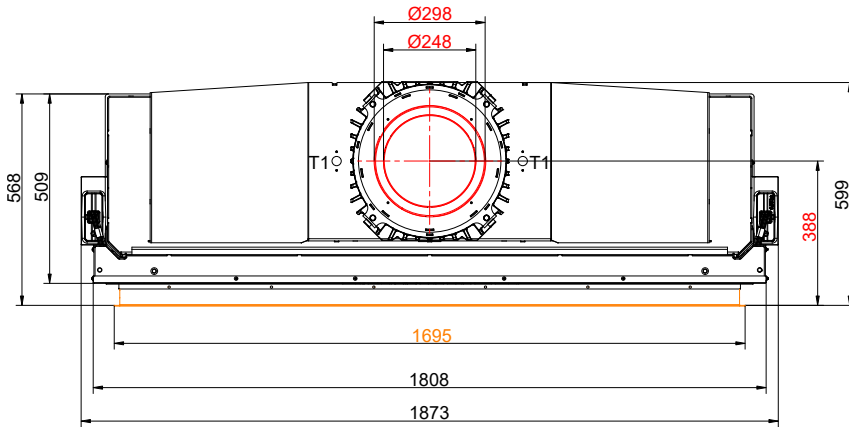
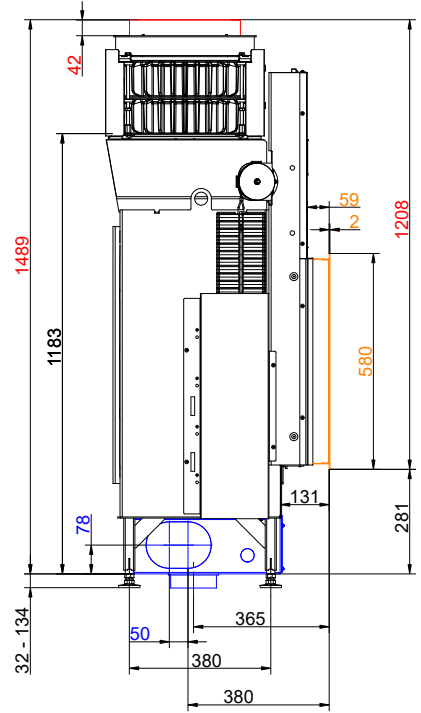
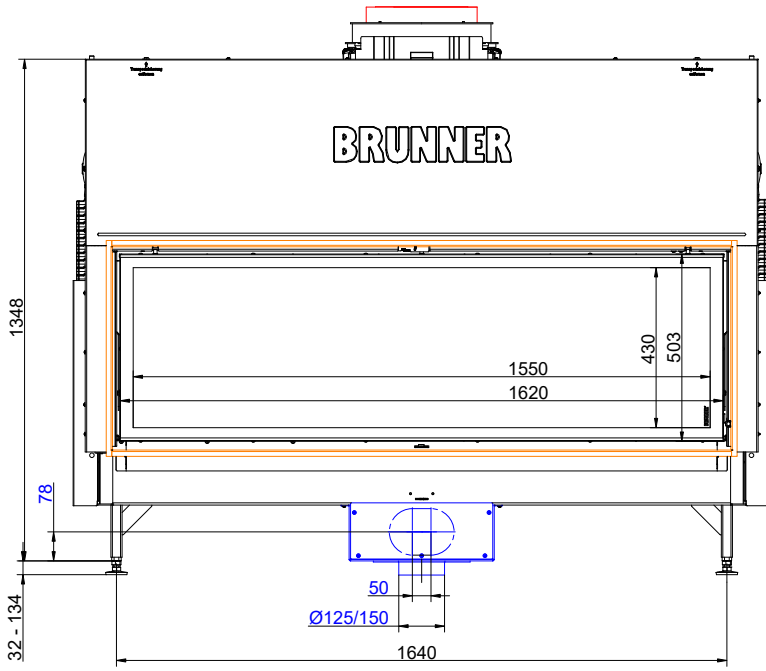
BRUNNER®

Dimension sheets - BKH flat 50-162 lifting door



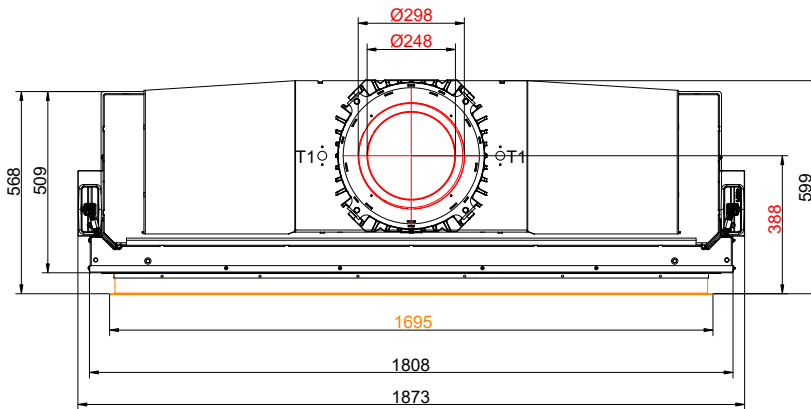
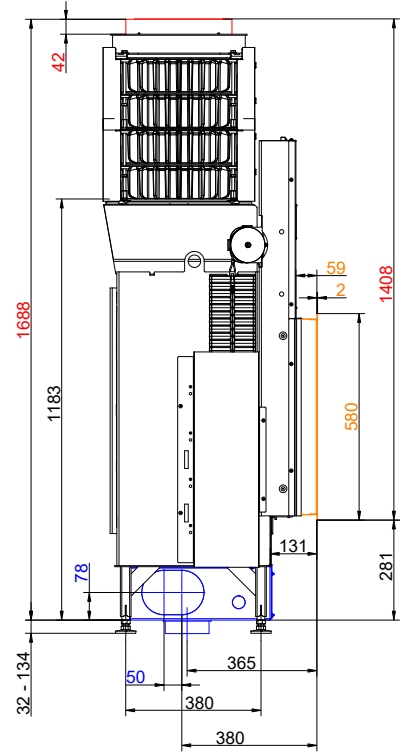
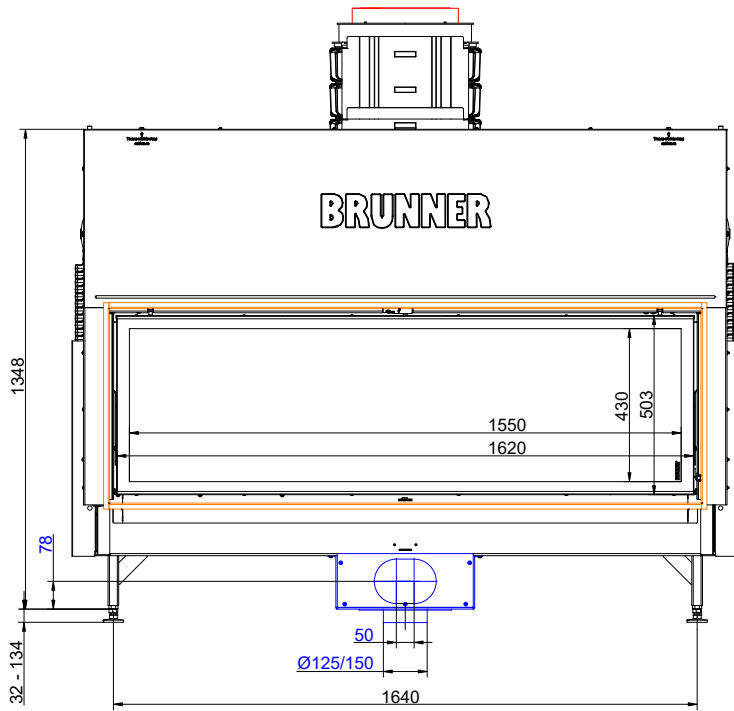
... with mounting frame and 2x cast iron heat exchanger rings

Dimension sheets - BKH flat 50-162 lifting door



... with door frame and 2x cast iron heat exchanger rings

Dimension sheets - BKH flat 50-162 lifting door



... with door frame and 4x cast iron heat exchanger rings

We suggest for CAD planning Palette CAD. Permanent updated drawings: www.brunner.de

Frames/ flue gas outlet connection/ combustion air supply connection/ front variants/ support bearing are marked in color.

Planning and installation - BKH flat 50-162 lifting door

Tested according to		EN 13229 W	EN 13229 WA
Values measured at		Rated power ¹⁾	Storage operation ²⁾
Data for functional demonstration			
Rated heat power	kW	14.5	-
Fire wood volume	kg/h	4.1	5.3
Combustion performance	kW	17	23
Flue gas mass flow	g/s	12	19
Flue gas temperature after:			
Flue outlet nozzle Ø	°C	250	290
2 x / 4 x cast iron heat exchanger rings + dome	°C	190 / 160	230 / 180
Necessary supply pressure	Pa	13	13
Fuel amount	kg	4.9	6.3
Combustion air consumption	m ³ /h	42	54
Combustion air connection Ø	mm	150	150
Heat distribution			
Insert / reheating surface	%	30 / 30	30 / 30
glass ceramic / glass ceramic coated (GKB)	%	40 / 30	40 / 30
Cross-section of gratings ³⁾			
exhaust warm air	cm ²	1000	1000
Recirculation air	cm ²	1000	1000
Minimal oven surface for closed construction type			
Heat dissipating surface	m ²	6.5	6.5
Minimal distances of the fireplace			
Heat protection panel for cladding, insulation layer	cm	-	-
to cladding, insulation layer	cm	5	5
to the floor (non-combustible)	cm	3	3
Fire protection with active rear ventilation, intermediate space			
Minimum insulation thickness for construction : insulation material 5 cm rear active ventilation wall ⁴⁾			
for mounting wall (combustible/non-combustible)	cm	5	5
Minimum insulation thickness for construction: insulation material 30 cm closed gap ceiling ⁵⁾			
for ceiling (combustible)	cm	10	10
Fire protection with adequate insulation material			
Minimum insulation thickness for construction: insulation material mounting wall, ceiling, floor ⁵⁾			
with heat protection panel, mounting wall (non-combustible) ⁶⁾	cm	6	6
with heat protection panel, mounting wall (combustible) ⁶⁾	cm	12	12
Mounting wall (non-combustible)	cm	8	8
Mounting wall (combustible)	cm	18	18
Ceiling (non-combustible)	cm	8	8
Ceiling (combustible)	cm	22	22
Floor (non-combustible)	cm	0	0
Minimum distances in front of the combustion chamber, glass ceramic / glass ceramic coated (GKB)			
for combustible parts	cm	≥ 120 / ≥ 80	≥ 120 / ≥ 80
Weight			
Fireplace insert + combustion chamber inner lining chamotte/cast iron	kg	354 + 156 / 196	

Meets requirement/limit values for:

Ulrich Brunner GmbH
 Zellhuber Ring 17 - 18
 D-84307 Eggenfelden
 Phone: +49 / (0)87 21 / 7 71-0
 info@brunner.de | www.brunner.de

Subject to technical and assortment changes. Errors excepted.

BRUNNER®

State: 2025-04-14

Planning and installation - BKH flat 50-162 lifting door

EU / Germany

Ecodesign / 1. BImSchV (Stufe 2)

- 1) Indications to "Rated power" determined with 4 heat exchanger rings made of cast iron and Ø200 dome.
- 2) Indications to "Storage operation" for the manual execution of the reheating surface (guide values).
- 3) Air cross-sections if the specified nominal heat output is desired as the heat output.
- 4) Fire safety: Values determined with air cross-sections recorded for testing purposes; active rear ventilation, stove shell is heat emitting.
Insulation thickness 5 cm calcium silicate board (brands: Promasil, Silka, Skamol) and 5 cm active rear ventilation with diagonally positioned air circulation and supply air openings of 75 cm² (5x15 cm) each. For detailed design, see assembly instructions.
- 5) Fire safety: values determined in safety test with air cross-sections recorded for testing purposes; stove shell is heat emitting.
Information on replacement insulation material with calcium silicate boards (brands: Promasil, Silka, Skamol).
The specifications for non-combustible walls/ceilings and the structure with a closed gap (30 cm) correspond to the specifications of TROL (Germany), see assembly instructions.
- 6) Heat protection plate: accessory for BKH flat/tunnel/corner versions; factory-fitted for BKH panoramic fireplaces.